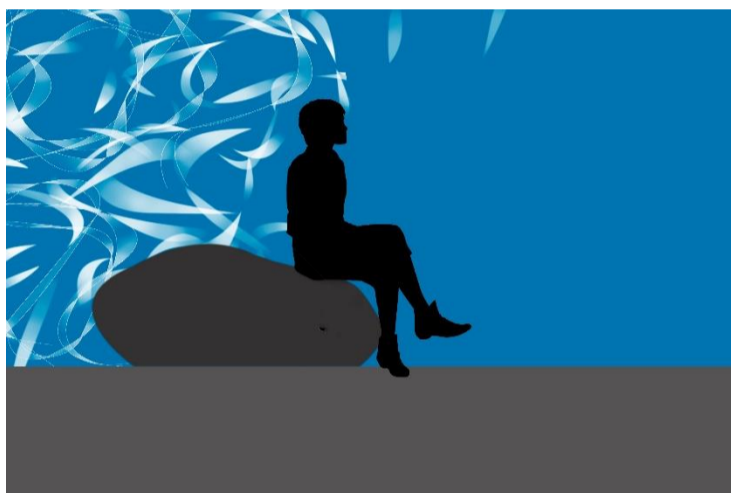




Exhibitions

Source – Esther Rolinson

3rd March 2022 – 24th May 2022



'Source' is a series of artworks for the new Musgrove Park Hospital Surgical Centre by multimedia artist Esther Rolinson. Over the past two years, Esther Rolinson has developed concepts for patterns and forms that will create two and three-dimensional artworks.

Source Exhibition shows selected drawings from this body of work and outlines how they will be incorporated into the architecture of the Surgical Centre environment.

The focal point of the art project is a sculptural courtyard in which patients, staff and visitors can stay, sit, or wander through. Extending from this is a family of artworks that will create a rich visual environment for the adjacent spaces. These include a drawing that will be incorporated into the building façade, drawings and digitally created designs for the interior design scheme and an animated screen-based artwork.

In 'Source', Esther Rolinson is looking into fundamental aspects of the interactions that take place in a hospital. Her work explores the importance of trust and exchange - the human sensory language that we use to communicate beyond words, even with people who are strangers to us.

To express the feeling of trust, Esther Rolinson felt compelled to draw voices like abstract birds suspended in the air, hold sounds with her

hands; capturing the hollow in the back of someone's throat when calling out.

While the artist was composing the shapes, she realised that the awareness of trust was not within the lines of the drawing but within the spaces they encompass. After more than a year of drawing and evolving these forms, Esther Rolinson could see them as all kinds of intangible things: sounds, ideas of catching, holding and containing interconnected networks.

The artist knew how the shapes could build and grow from each other like living forms. The patterns lines and shapes felt alive in a threading motion, an evolution of waving liquid forms spilling into each other, but she still could not tell where they came from other than a powerful feeling, an unstoppable urge to call out, to join with a chorus of calling.

Sometimes the notion of trust sends us rushing back in our memories to intangible feelings that never fade. Sometimes it is a sensation that presents itself in the here and now, in its most potent form. '*Source*' as a set of artworks embodies the feeling we name trust. That trust might be when you call, and life answers you in whatever form it takes.

Here, in this exhibition, Esther Rolinson introduces these concepts that are familiar and shared amongst us.

For sales and further information please contact Art for Life,
artforlife@somersetft.nhs.uk
Tel: 07471 357664 www.somersetft.nhs.uk/art-for-life