



Somerset
NHS Foundation Trust



Recruitment Pack

Primary Care Dental Service Special Care Dentistry, Dorset and Somerset

Kindness, Respect, Teamwork
Everyone, Every day



Hello and Welcome

Thank you for your interest in our Primary Care Dental Service for Dorset and Somerset - part of Somerset NHS Foundation Trust.

Our teams are here to deliver great care and high quality services for our cohort of special care patients. We are all particularly lucky to be able to do this in the most beautiful counties of Dorset and Somerset.

In joining us you will be part of, and be supported by, a dedicated and passionate workforce with the patient at the heart of everything we do.

We wish you much success in your application and look forward to welcoming you into our service.



*Zillah Morris, Service Manager
and Daniel Rawles,
Deputy Service Manager*



*Lorna Hollingsworth, Consultant in Special
Care Dentistry & Clinical Director and James
Coulston, Consultant Vascular Surgeon
& Associate Medical Director*



Why Somerset NHS Foundation Trust?

Somerset NHS Foundation Trust runs acute hospital services, community services, mental health and learning disability services, and a quarter of Somerset's GP practices. It runs services from two acute hospitals – Musgrove Park Hospital in Taunton, Yeovil Hospital in Yeovil – services in the community, services from the 13 community hospitals in Somerset, a range of mental health and learning disability services and Symphony Healthcare Services which runs a quarter of GP practices in Somerset. Our Primary Care Dental Service is delivered across Somerset and Dorset.

Our trust is the result of two mergers. The first merger in April 2020, between Taunton and Somerset NHS Foundation Trust and Somerset Partnership NHS Foundation Trust, brought together acute services, community service and mental health and learning disability services. The second merger brought together acute services from both acute hospitals in the county and a large proportion of the county's GP practices under Symphony Healthcare Services.

We believe that the broad range of services that we offer within one organisation put us in a better position to provide mental and physical health services for our population, helping people to enjoy healthier lives with improved equitable access to the specialist care and treatment they need, when they need it.

We are commissioned by the Somerset Integrated Care Board (ICB) and the Dorset Integrated Care Board (ICB), and work with stakeholders such as Local Dental Committees in Dorset and Somerset, the South West Managed Clinical Networks (MCNs), general dental practitioners, social care and the voluntary sector.



Kindness, Respect, Teamwork
Everyone, Every day



Primary Care Dental Service Dorset and Somerset

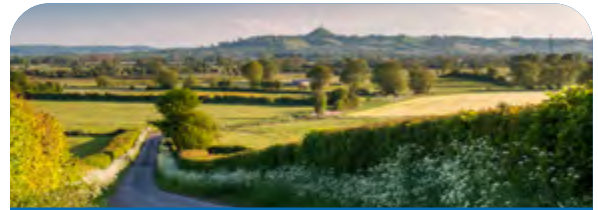


Supported by

Consultant in Special Care Dentistry
Clinical and Assistant Clinical Directors
Specialists in Special Care Dentistry
Salaried Dentists
Specialist Trainee Registrars
Dental Therapists
Senior Dental Nurses / Dental Nurses
Service Management Team
Receptionists and Administrators
Business Team



Dorset



Somerset

Clinics in Poole and Dorchester

Clinics in Bridgwater, Taunton,
Yeovil and Frome

Offering special care and
occasional care for adults and
paediatrics, sedation, domiciliaries
and general anaesthetics
(Dorset County Hospital)

Offering special care and
occasional care for adults and
paediatrics, sedation, domiciliaries,
minor oral surgery, urgent care
and general anaesthetics
(Musgrove Park Hospital
and Yeovil District Hospital)

Where we are



Bridgwater

Taunton

Yeovil

Frome

Dorchester

Poole

Wells

Shepton Mallet

Warminster

Glastonbury

Wincanton

Wellington

Ilminster

Honiton

Sidmouth

Seaton

Weymouth

Bournemouth

Living in Dorset and Somerset - did you know..?

- Over half of the county is designated an Area of Outstanding Natural Beauty, including the spectacular Jurassic Coast – the only natural World Heritage Site in England
- Over 150 miles of coastline with award winning beaches
- Dorset has 364 more hours of sunshine throughout the year compared to the UK average
- Between 83% and 93% of schools in Somerset and Dorset have been rated good or outstanding by Ofsted
- Many beautiful market towns and seasonal cultural events through the counties including the iconic Glastonbury Festival
- Great links to motorways and public transport reaching towns and cities such as Bath, Bristol and Exeter
- Both counties have easy access to international airports such as Bournemouth, Exeter, Bristol and Cardiff
- Fast ferry service linking Poole and Portsmouth with the Channel Islands of Guernsey and Jersey and the Western Channel ports of St Malo and Cherbourg.
- Somerset is home to some of the most iconic food brands in the world including Cheddar and Cider!



**Kindness, Respect, Teamwork
Everyone, Every day**

Why choose the Primary Care Dental Service?



Consultant and Specialist led service



Appointment times range from 30-90 minutes



Rising Star and NHS leadership programmes e.g. Edward Jenner and Mary Seacole



Experienced clinical supervisors and mentors



Supported CPD days for your GDC portfolio



Progression and development opportunities from trainee to consultant posts, including Specialist placements



Team based working



Clinic opening hours from 08.30 – 17.00



Mature business structure to support and take on claim and administration duties (no lab bills)



Salaried dentist terms and conditions of employment, including Crown indemnity and PAYE



Clear job planning annually and to support any new developments in your practice



Explore postgraduate training and courses - Special Care Dentistry, Conscious sedation and radiography



Variety of work including inhalation sedation, IV, MOS, general anaesthetic and domiciliaries



Agenda for Change terms of employment for dental nurses, dental therapists and all support team members



Monday-Friday working week, full time equivalent hours of 37.5 per week



Typical working day would be 75% patient facing, 25% non-patient facing



Wide range of NHS benefits including relocation, flexible working, pension contributions, market leading annual leave allowance, not to mention Blue Light Card and NHS exclusive discounts.



Dedicated and highly skilled dental nurse team support



Opportunity for Out of Hours bank work



Today we are looking for

Band B Senior Dentist to join our East Dorset team Permanent contract - Salaried Services

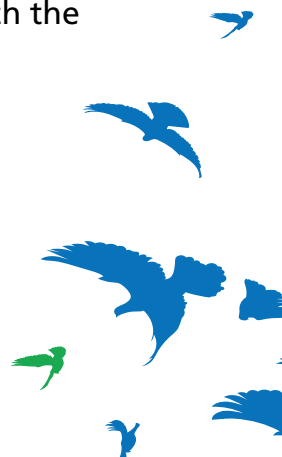
We would like to invite you to get in touch with us to discuss how this opportunity will support you and your career. Please see our full job description and person specification as part of the application for this role through [NHS Jobs](#).

In summary:

- Dentists are a vital and valued part of the work we achieve in community and special care dentistry. You will work amongst other Band A dentists, Band B Senior dentists and Specialist and Consultant dentists. You will be supported in your day to day role by our dental nurses and business administration and reception team colleagues
- All our dentists are important to support clinic work, including domiciliary or residential care settings, hospital work where trained and experienced as well as projects such as epidemiology in local schools
- You will be helping to meet our patients' needs with any additional or extended skills support, for example sedation work and general anaesthetic work in our local hospitals with multidisciplinary team support.

Some of your main responsibilities with our patients will include:

- To provide oral health care for patients (adults and children) with disabilities and Additional Needs including those who are medically compromised.
- To provide comprehensive high quality oral healthcare under local anaesthesia and behaviour management and if competence appropriate also with sedation and general anaesthesia as required. To understand and demonstrate all aspects of pain and anxiety management particularly for patients with Additional Needs.
- To work collaboratively with primary and secondary care dental colleagues and other health and social care agencies to facilitate our patient centred service.
- To maintain up to date knowledge and skills on clinical techniques and their application to patient dental care.
- Recognise and assist with management of medical emergencies within the dental surgery and on domiciliary visits.
- To obtain informed consent to treatment and document in accordance with the Mental Capacity Act 2005 and Trust policies.
- To provide flexibility and assistance to the clinician and team you are working with and those within the service nearby





Opportunities:

- Wide variety of development opportunities - CPD support, training for post-graduate courses, stepping stone to broaden your community and special care dental experiences
- Best Practice Groups throughout the year to meet with service wide colleagues, share learning and updates in practice
- Clinical supervision
- Projects - Examples are Epidemiology in schools and clinical audits
- Leadership and succession planning opportunities
- A real focus on your Wellbeing as part of a large supportive organisation.

For the full job description and person specification please visit www.nhs.jobs reference DEN44.



We'd love to hear from you...



If you would like to find out more about us before you apply, we welcome informal visits to meet the teams and see what it would be like to work in community dentistry.

Please feel free to contact any of the team as below and we would be happy to arrange this for you.

Contacts:

Lorna Hollingsworth, Consultant in Special Care Dentistry/Clinical Director –
and based at this clinic at DCH
07867 461738 or lorna.hollingsworth@somersetft.nhs.uk

Erica Boulton, Workforce Support Manager
07771 396042 or erica.boulton@somersetft.nhs.uk

Zillah Morris, Service Manager
07741 231146 or zillah.morris@somersetft.nhs.uk



**Kindness, Respect, Teamwork
Everyone, Every day**